

LEONLOARD COMMISSIONED PORTRAITS

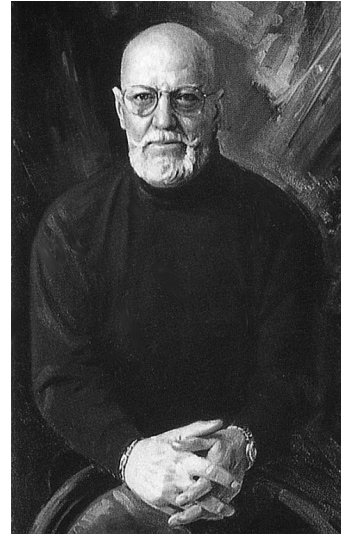
Artist: Richard Miller, Michigan

When Richard Miller left Canada in 1957 for greater exposure and competition in the United States, he quickly made a reputation across the country as an ultimate colorist and romantic realist. Miller thinks of himself as a designer who preconceives what he creates, a deliberate artist who has the capacity to describe exquisite detail with great economy of stroke.

Miller's work spans continents, including Britain's Royal Family, Queen Elizabeth II and Prince Philip, the Queen Mother, Speakers of Parliament, members of the Henry Ford Family, as well as numerous governors and sports figures nationwide. In addition to his portraits, landscapes and historical paintings, Miller has also worked in sculpture to create busts of historical figures. As a member of the prestigious American Society of Portrait Artists, Miller was voted the 'People's Choice Award for 1995'. He is also the current President of the International Guild of Fine Artists, and a charter member of The Portrait Society of America and The National Sculpture Society.

Miller is dedicated to portraiture and believes that 'nothing in art is better than a good portrait...and nothing worse than a bad one'. He feels fortunate to 'contribute to people's lives through his portraits, giving them some sense of immortality'.

If you are interested in commissioning Richard Miller for an oil portrait, please contact Arnold McRae, President of **LEONLOARD COMMISSIONED PORTRAITS**, at 800.270.9017.



PORTRAIT PRICING FOR RICHARD MILLER

09.07

Head and shoulders (with hands)	20" x 16"	\$3,500
Head and shoulders (with hands)	24" x 20"	\$4,500
Three-quarter length.....	30" x 24"	\$5,500
Three-quarter length.....	36" x 24"	\$6,000
Full length	40" x 30"	\$7,500
Full length	48" x 36"	\$8,500
Extra Size	60" x 40"	\$11,000
Extra Size	72" x 48"	\$15,000
Each additional figure on one canvas.....		50%

Above with appropriate neutral backgrounds. Detailed interior or exterior backgrounds, 50% or more additional. There is a charge for additional subjects. . All sizes are approximate and size depends on pose, composition, background, etc.

Prices are uniform worldwide, and are not negotiable. The frame and shipping is additional and is not included in the price. Sales tax is charged when applicable.

Mr. Miller prefers to travel to clients for the 1) initial session for several hours of photography, sketching, and color study. He will return to his Studio to complete the painting. 2) Mr. Miller will return for the delivery of the completed portrait, and may spend one to two hours to fine tune the portrait. The cost of the artist's travel will be billed and collected separately.

All prices and procedures are subject to change.

Representing the nation's finest original portrait painters for over half a century.

P.O. Box 230216 • Montgomery, Alabama 36123-0216 • 334-270-9030 • 800-270-9017 • www.leonloard.com/llcp